

New Valordata display features

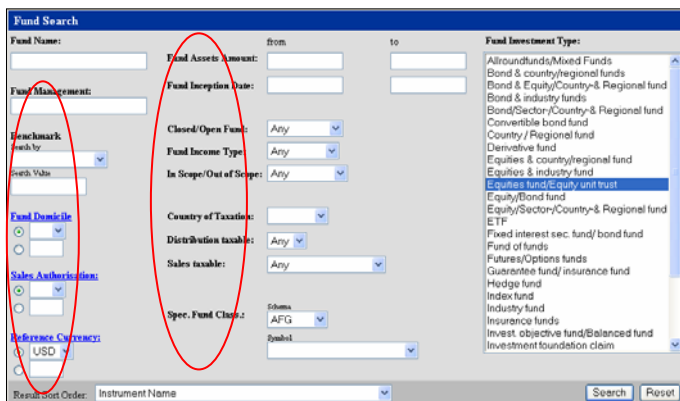
We are pleased to announce a number of enhancements to the Valordata service for reference and corporate actions data. Below you will find a summary of the main new features concerning both functions and data content. While appearance and navigation may vary slightly between the various products, the data content remains the same:

Data subject to fees

Depending on what is stipulated by the data suppliers, access to various types of data supplied through this service is subject to authorization. Search functions and displays are available only to users with the appropriate entitlement. For details, please contact your Telekurs sales advisor.

This concerns the following data displays:

- SEDOL and OPOL output in the Market Overview and the Listing Details
- Display of EU tax data and certain other tax data
- ISIN numbers issued by Standard & Poor's (country prefix: US, CA, AN, KY, VG, BM and BS). If the user does not have authorization, Valoren numbers will be displayed instead of the requested ISIN numbers.
- Company structures from Dun & Bradstreet
- Ratings from various agencies



The search screen in the **Fund Search** feature has been enhanced considerably. The number of criteria has been increased to include, for example, fund domicile, classification, reference currency, fund assets and tax-related information. You will find additional information in the "Fund Classification" section (go to Fund Details).

The D&B D-U-N-S® Numbers have now been integrated. These provide information on corporate structures and can now be entered as a criterion under Company in the **Quick Search**. The D-U-N-S Number is displayed under **Company Identification**. **Other Related Institutions** shows, for example, the company's parent organization. Special authorization is needed to access and display the D-U-N-S Company Structures.

QUICK SEARCH

Search for: Company

Search by: CVR

Name GKey CVR

DUNS

FITCH MDY OeNB RCS S&P TVABE UIC

SEARCH

[Search Issued Instruments](#)
[All Issued Instruments](#)
[All Corporate Action](#)
[Other Related Institutions](#)
[Latest Corporate Actions](#)
[Company Structure Dun & Bradstreet \(DU\)](#)

Royal Dutch Shell PLC

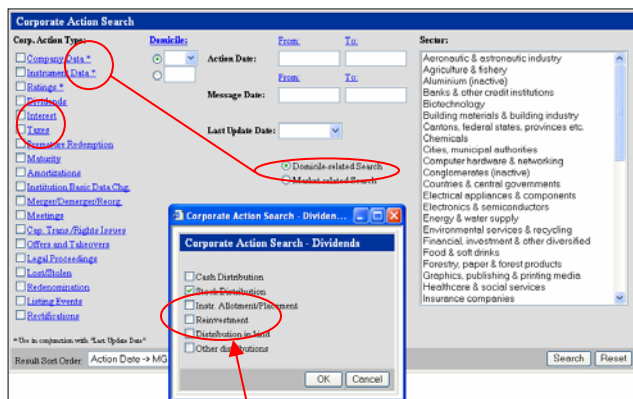
Institution ID	GK257648		
Institution Type	Company (1)		
Legal Form	Corporation (1)		
Institution Status	Active (5)		
Short Name	Royal Dutch Shell (English) (4)		
Full Name	Royal Dutch Shell PLC (English) (4)		
Location	London		
Domicile	United Kingdom (402)		
Home Page	www.shell.com		
Main Language	English (4)		

Other Related Institutions

GK257648	Royal Dutch Shell PLC	DUNS Ultimate Parent	Active (5)
--------------------------	-----------------------	----------------------	------------

Company Identifications

Moody's institution identification (MDY)	0808544449
Italian issuer identification number UIC (UIC)	000501742W0
DUNS Number (DUNS)	423792808



The **Corporate Action Search** function has been expanded:

- An asterisk refers to criteria that only search for the last update.
- The Corporate Action types have been revised and now show only actions relevant to the group in question.
- All tax-relevant messages have been grouped together under Taxes: here you will find all taxes on dividends, interest and other pertinent corporate action information.

Matching Corporate Actions				
Corp. Action Type: Dividends , Last Update Date: 30.05.2006 , Search Type: DOMICILE				
ID	Last Update Date:	Corporate Action	Inst./Instr.	Exp
CH856504	30.05.2006	Stock dividend (11)	American Safety	<input type="checkbox"/>
CH992377	30.05.2006	Portfolio distribution (Spin-off) (12)	CEMEX-1	<input type="checkbox"/>
CH2111642	30.05.2006	Portfolio distribution (Spin-off) (12)	Liberty Global-B	<input type="checkbox"/>
CH976890	30.05.2006	Portfolio distribution (Spin-off) (12)	Texas Ind	<input type="checkbox"/>

Export Marked Instruments

The subgroups are shown directly when the search result is displayed, thus giving you a faster and more precise overview.

Other new features and changes in brief

- **More precise information for fund documentation:** In the Instruments Overview you can use the link to call up a fund profile even if no annual/semi-annual report or prospectus is available for the fund.
- The **Quick Search (by company)** now features the following options: D-U-N-S (searches for D-U-N-S Numbers), RCS (French identification numbers), TVABE (Belgian VAT numbers), UIC (Italian ID nos.). VAT, BIC and ITK are no longer available.
- **Clearer ratings displays:** The full and abbreviated ratings for securities and companies are now shown in two columns rather than underneath each other as previously. For company and bond ratings, links will take you to the ratings history of the rating agency concerned rather than the existing composite list on one page.
- **Quick view of company status:** Company Structure and Related Institutions will now feature an "active" or "inactive" status.
- **New display features for Instrument Overview and Instrument Details:**
 - If no interest rate is available, the **interest type** is shown separately. Otherwise it is shown after the rate.
 - The **fund description** now includes a number of additional details (see section on Funds above).
 - Under currencies and **foreign exchange transactions**, minor units are now shown for some currencies. In addition, the issuing currency, trading currency and amount, final maturity and quotation type are displayed.
 - **Hybrid** instruments are displayed in greater detail, with a breakdown into interest component and option premium component.

If you have any questions about the new functions and how to display them, please call our central HelpDesk in Zurich on tel. +41 44 279 55 55, or contact our support organization in your local area.